



Your Automatic
Pool Cover Authority™



AUTOMATIC POOL COVER & SAFETY MESH FENCE

INSTALLATION, REPLACEMENT, AND SERVICE

TABLE OF CONTENTS

POOLSAFE SERVICE.....	1
PREMIUM VINYL POOL KIT	9
PRODUCT BENEFITS	2
COVER OPTIONS.....	3
POOL TYPES	4
COVER TRACKS & LIDS	5
SYSTEM COMPONENTS.....	6-8
SAFETY MESH FENCE.....	10
SAFETY FENCE FEATURES.....	11
FREQUENTLY ASKED QUESTIONS.....	12

POOLSAFE SERVICE

EXPERT TECHNICIANS

When you partner with Poolsafe you are partnering with a national pool cover installation company, not a subcontracted technician. Your local technician lives and works in your area.

Our techs provide industry leading expertise and experience. Collectively, our technicians can ensure we provide solutions even in the most unique circumstances.

- Hundreds of years of combined experience
- Knowledgeable, professional, courteous
- Specifically trained on all auto cover systems
- 98% First call completion rate
- Local presence, national support



ON-HAND INVENTORY, ON TIME INSTALLATIONS

Because we maintain new-system inventory in your area, and employ a nationwide network of technicians, we are able to respond to your request faster than other pool cover companies.



EXPERT BUILDER SUPPORT

We have a dedicated builder-support team available to assist in all aspects of your projects. An expert builder support representative is available to assist you, even when your preferred rep is unavailable. Poolsafe values your time and is dedicated to responding quickly.



INDUSTRY-LEADING PRODUCT

We understand that sourcing high quality components is a huge part of providing a high-quality finished product. That's why Poolsafe sources product from Automatic Pool Covers, Inc., the industry leader in automatic pool covers. We ensure your customers get the most durable, reliable cover system on the market.



HOMEOWNER PROTECTION

- Restrict and control access to prevent unsupervised access to pool
- Highest level of security gives peace of mind
- Withstands thousands of pounds of surface weight
- PowerTouch™ Controller secures pool in 45 seconds on average
- Meets safety standards: UL/ASTM-1346 and building codes, UL compliant



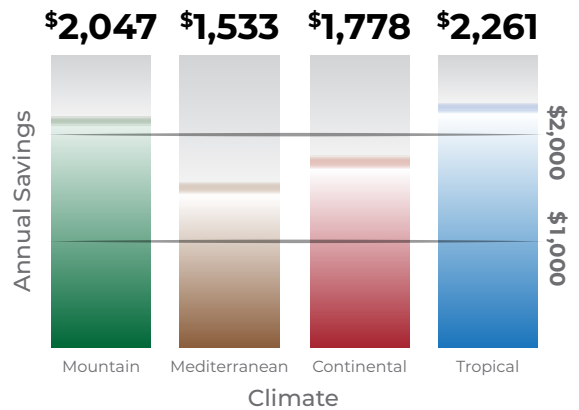
* Walking or standing on pool cover is not recommended.

COST SAVINGS*

AUTOMATIC POOL COVER SAVINGS POTENTIAL

- Up to 70% on heating costs
- Lowers evaporation up to 90%
- Reduce operating costs \$1,500 - \$2,300 per year*
- Chemicals can last 35% - 60% longer
- Extends the life of pool equipment
- Safety cover, a solar cover, and a winter cover all-in-one

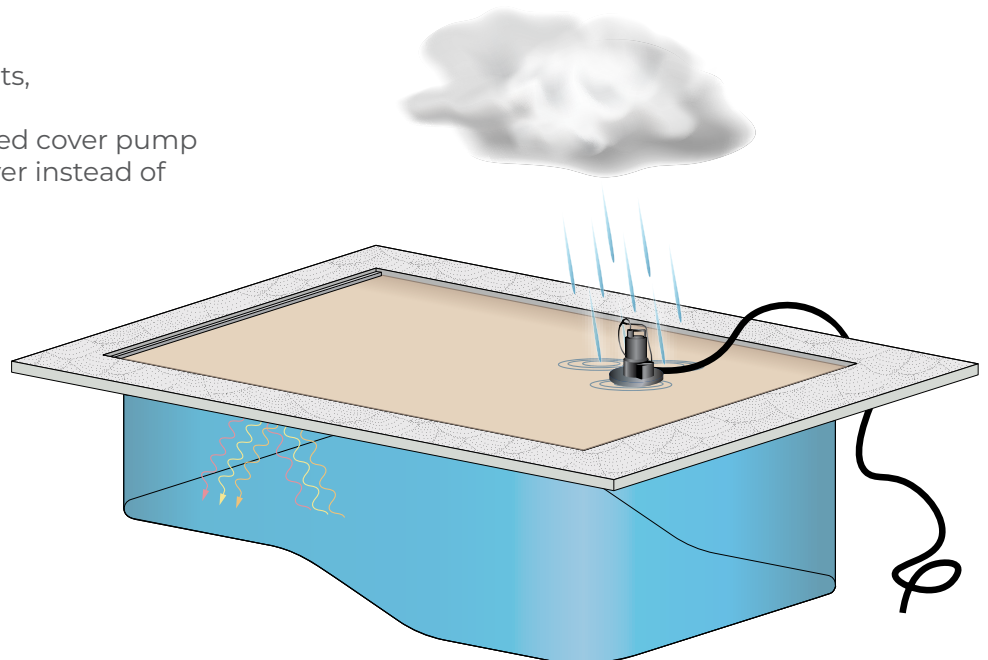
Average Annual Savings with a Safety Cover



*Dept of Energy findings
www.energy.gov

CONSERVES POOL WATER & SAVES TIME

- Protects pool from rain, contaminants, and other particulates
- Rain water is removed by the provided cover pump
- Leaves and other debris fall onto cover instead of into the water
- Extends the swim season
- Reduces cleaning time
- Provides more time to enjoy family!



SYSTEMS FOR ALL TYPES OF CONSTRUCTION



VINYL LINER



GUNITE/SHOTCRETE



FIBERGLASS

ACCOMMODATES DESIGN FEATURES



DIVING BOARDS



SLIDES



WATER FEATURES

VINYL OPTIONS

- Vinyl colors to compliment or blend into the poolscape
- Vinyl sample swatches are available.

NAVY



BEIGE



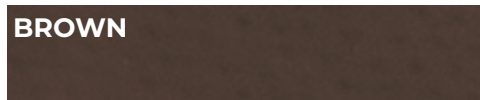
LIGHT GRAY



ROYAL BLUE



BROWN



CHARCOAL



LIGHT BLUE



GREEN



Colors shown are representative of the vinyl colors. Actual vinyl colors may vary due to lighting, vinyl dye lots, printing, etc.

We work with you to install an automatic cover on many pool types, shapes, and configurations.



RECTANGLE



RAISED WALL



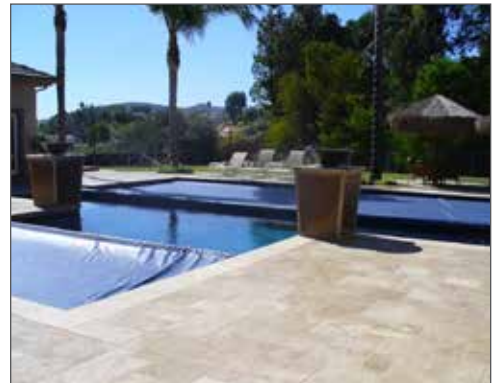
VANISHING EDGE



PERIMETER OVERFLOW



EXTREME CANTILEVER



T-SHAPED OR L-SHAPED



DECK ON DECK



FREE FORMED



EXISTING POOL

COVER TRACKS & LIDS

Poolsafe offers a variety of tracks and lids to accommodate pool aesthetics and budget options.



RETAINER TRACK

Retainer built into pool wall during construction for maximum strength



VANISHING EDGE TRACK

Accommodates vanishing edge wall whether sloped in or out



UNDER TRACK

Installed on the under side of poured concrete deck



TOP TRACK

Installed directly on top of deck



FLUSH ALUMINUM LID

Walk-on gray painted aluminum lid sits flush with deck



ALUMINUM LID

Rests on top of the deck, not designed to be walked on



14" WALK-ON COPING LID

Lid covers vault area, lead edge bar does not retract completely



18" WALK-ON COPING LID

Lead edge bar retracts to the lid

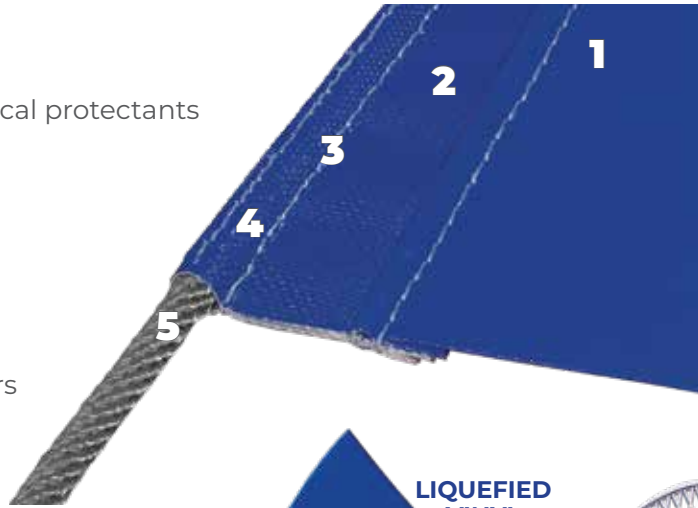


24" WALK-ON COPING LID

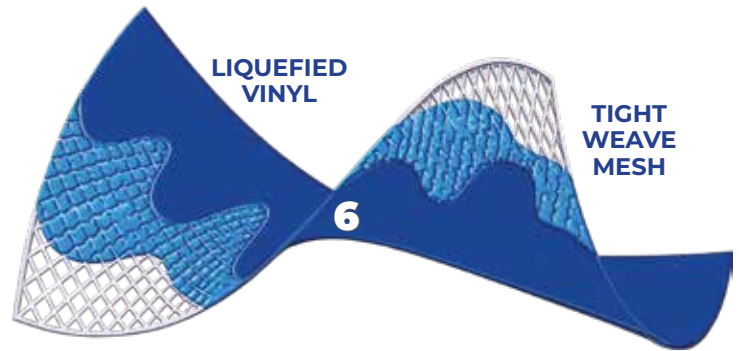
Lead edge retracts beneath lid, requiring a 5" waterline

COVER CONSTRUCTION

1. Durable Vinyl
 - Vinyl infused with UV and pool chemical protectants
2. Hybrid Manufacturing Process
 - Best performance
3. Heat-Welded Webbing
 - Color matches vinyl for a clean look
4. Proprietary Manufacturing Process
5. Invis-A-Rope™
 - High performance and reliable
 - Virtually invisible in track to swimmers
6. Poured, or coated vinyl
 - Tighter mesh, significantly reduces shrinkage, improved performance



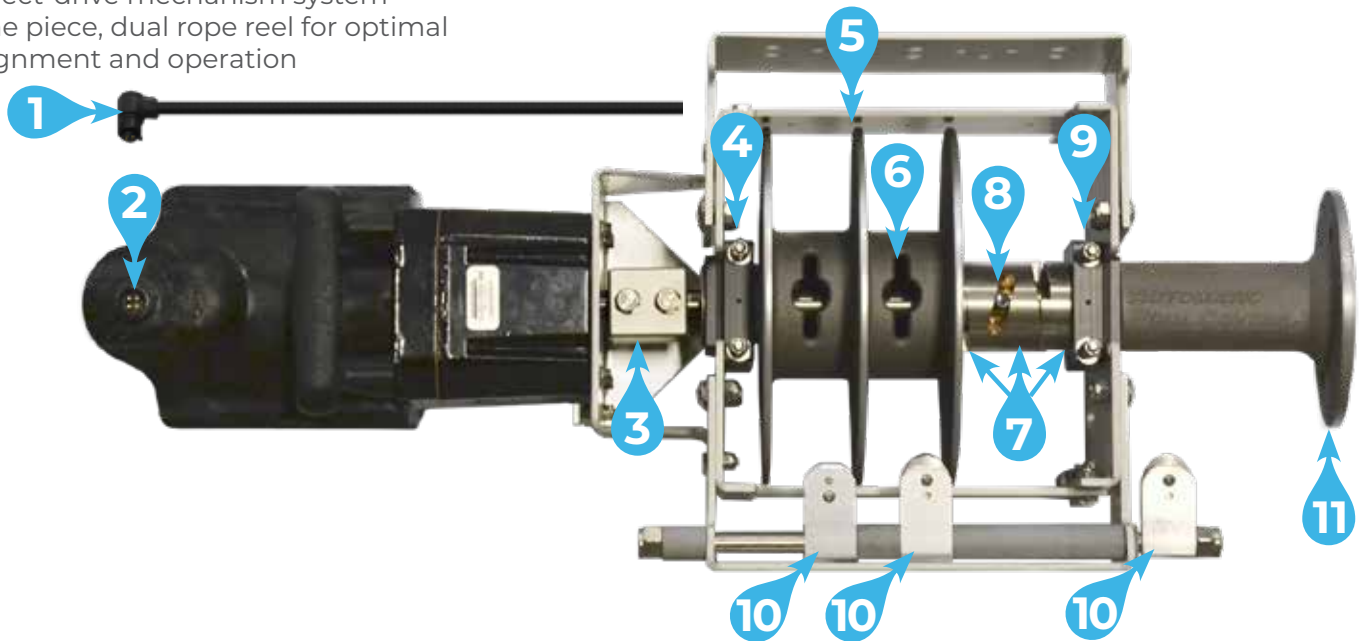
(5) INVIS-A-ROPE™ SHOWN IN ALUMINUM TRACK



MECHANISM

- Aluminum and stainless steel construction
- Direct-drive mechanism system
- One piece, dual rope reel for optimal alignment and operation

AutoGuard



- | | | |
|--------------------------------------|---|---|
| 1. Wire Harness with Quick Connector | 5. Rope Reels | 9. Tension Block for Roll-Up Tube |
| 2. Quick Connect Power Connector | 6. Fastener-less Rope Key Holes | 10. Pulleys for Ropes |
| 3. Quick Release Motor Coupler | 7. (3) Shifting Dogs
Two Single and One Double | 11. End Casting to Attach to Roll-Up Tube |
| 4. Tension Block for Rope Reels | 8. Hardened Steel Drive Pin | |

SYSTEM COMPONENTS

APCP-1700-40 PUMP

- Exclusive 40-Ft. power cord
- Exclusive Caviar Black color
- Up to 1,745 gallons per hour
- CoverBlast® or garden hose connection
- Automatic On/Off
- 3 year warranty



Image shown with exclusive black CoverBlast®

MOTOR

- Includes Seal Technology™
- 100% submersible, water-resistant



TOUCHPAD CONTROLLER

- Patented SmartMotion™ technology
- Electronic torque limiting continuously protects the cover system during operation
- Personalized, customizable code restricts access to pool
- Back-lit keypad allows clear visibility night and day

POWERTOUCH.



SAND-INFUSED PAINT LEAD EDGE

(Only with **THREE-SIXTY-FIVE.**)



CLEAR ANODIZED LEAD EDGE



4" LEAD EDGE FOR EXTRA WIDE POOLS

ATLAS LID BRACKET

EXTRA Heavy Duty



11" Standard Extension - 640 lbs/bracket

13"-16" Extension - 435 lbs/bracket

17"-20" Extension - 370 lbs/bracket

21"-24" Extension - 325 lbs/bracket

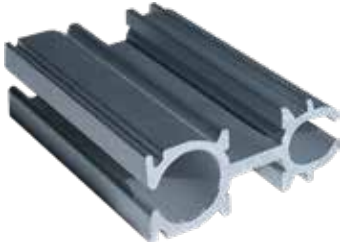
HD2 & HD3 LID BRACKETS

Heavy Duty



HD2 - 11" Standard Extension - 300 lbs/bracket

HD3 - HD2 with 12"-16" Extension - 175 lbs/bracket



2 CHANNEL TRACK

Enlarged channel enables cover and slider to occupy the same space and facilitates glider durability



3 CHANNEL TRACK

Dedicated third channel provides a dedicated area for the glider, more durable



VINYL LINER COPING

Top metal bull-nose remains visible; Middle opening receives track; Bottom slot receives vinyl liner edge; Sand infused for easy grip/non-slip



VINYL LINER RETAINER

Receives track and bead receiver for vinyl liner edge



GUNIT RETAINER

Installed between the pool structure and pool deck; provides maximum strength



REUSABLE FORM SHIM*

Fills space where track will be inserted; secures form in place while pouring deck
**Shown with 3-in. Bullet Shim*



90° FORM

Vertical form with rounded bottom and straight top enables finisher to tool the edge



INCLINE FORM

Form angle extends toward the pool and then rounds back toward the pool deck



3 CHANNEL PULLEY



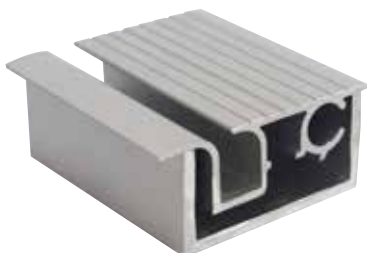
3 CHANNEL ROPE GUIDE



2 CHANNEL PULLEY



2 CHANNEL ROPE GUIDE



FLUSH TRACK



TWO CHANNEL

Under Track Glider Body

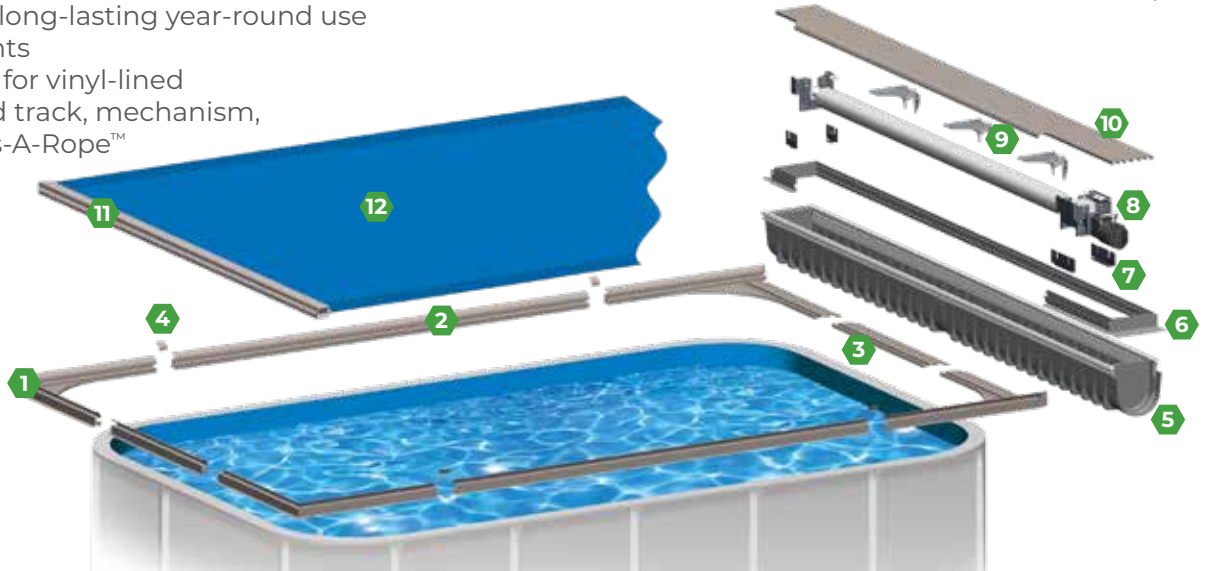


THREE CHANNEL

Under Track Glider Body

PREMIUM VINYL POOL KIT

- Complete safety cover system, engineered with superior components
- Best and most reliable automatic cover
- Hi-performance for long-lasting year-round use in most environments
- All-inclusive system for vinyl-lined
- Includes coping and track, mechanism, premium vinyl, Invis-A-Rope™



Pool Cover Pump*

*Included pool cover pump model may vary.

DESIGNED AND ENGINEERED TO WORK TOGETHER AS A COMPLETE UNIT FOR ACCURATE INSTALLATION AND YEARS OF TROUBLE-FREE OPERATION

- | | | |
|-----------------------------------|----------------------------------|----------------------------------|
| 1. One Piece Corner Assemblies | 5. Polymer Box Assembly | 9. HD2 - Removable Lid Bracket |
| 2. Simple One-Piece Coping Design | 6. Quick-Clip Lid Riser | 10. Flush, Non-Skid, Walk-On Lid |
| 3. Integrated Wall Cap | 7. Drop & Lock Mounting Brackets | 11. Lead Edge Bar |
| 4. Clip-on Coping Splice | 8. AutoGuard™ Drive Mechanism | 12. Vinyl Fabric |

<p>1 Corner Options</p> <p>90°</p> <p>3-IN. CHOP</p> <p>6 IN. RADIUS</p> <p>24 IN. RADIUS</p>	<p>2 One-Piece Encapsulated Coping (Options on pg. 8)</p>	<p>3 Wall Cap Supports + 5 Slide-On Polymer Box</p>	<p>7 Drop & Lock Brackets for Accurate Installation</p>
<p>9 Lid Brackets Support Non-Skid, Walk-On Lid</p> <ul style="list-style-type: none"> • Provides safe deck surface • Conceals cover and mechanism • Aluminum lid integrates with deck • Finished with exclusive sand-infused paint for non-skid surface 		<p>10 Strong Lead Edge</p> <ul style="list-style-type: none"> • Securely connects the vinyl to the system • Seals out debris • Lead Edge bumper prevents damage to pool wall 	

INNOVATIVE SOLUTION FOR POOL SAFETY

- A Poolsafe® Safety Fence can be used with or without an automatic cover
- More security than a pool alarm... more flexibility than a manual cover
- Exceeds ASTM fence standards
- Quick and Easy Tool-Free Assembly by an adult to protect your pool faster

STEELCORE™ POLE

STAINLESS STEEL REINFORCED, ALUMINUM COATED POLE FOR MAXIMUM STRENGTH

- 4 Times more metal than standard pole insert
- Reinforced with ½" solid stainless steel rod
- Aluminum powder coated poles
- Smallest holes drilled in deck without losing strength
- No plastic fence sleeve exposed to UV



Poolsafe®
Deck Sleeve
Dime Size



Standard Deck Sleeve
Silver Dollar Size

CLEARGUARD® MESH AND BORDER

LARGE-HOLE MESH FOR SUPERIOR TRANSPARENCY

- **Patented** heat welded technology combines the border and mesh into one seamless fabric (Patent number 11,168,489 B2)
- No stitching; removes chance of failed thread or peeling
- Large-hole mesh provides maximum visibility
- Reinforced weaving technique provides maximum strength
- Vinyl border: stretch, mildew, stain resistant

FENCE HEIGHT

4-FT. FENCE:

- Recommended height for a mesh pool fence
- Meets ASTM safety standards
- Below the line of sight of most adults

5-FT. FENCE:

- Meets requirements for day care, foster care, some building codes



SAFETY FENCE FEATURES

POOLSAFE® FENCE FEATURES

TRITON® GATE

- Innovative, *patented* gate design (Patent number 9,650,832 B2)
- 4-Sided with Concealed Top Bar and Tri-Pod Truss for Improved Alignment
- Designed for maximum safety and strength
- Tri-pod truss provides support insuring continual alignment and latching
- Includes magnetic, lockable latch for superior protection



BROWN

Neutral earth tone blends with landscaping or designs.



BEIGE

Great for a beige colored house or perimeter yard fence.



POOLSAFE® FENCE POLE INSERT

1/2-In. Solid stainless steel rod



STANDARD FENCE POLE INSERT

Hollow Aluminum



GRAY

Ideal for landscapes featuring rocks or concrete.



BLACK

Classic combination creating a clean and elegant look.



AUTOMATIC POOL COVER BENEFITS

IS AN AUTOMATIC COVER THE BEST WAY TO PROTECT THE POOL?

Yes. When closed, an automatic pool cover provides a barrier to the pool. Access to the pool is only available by opening the cover, which requires the pool owner's personalized access code (or key).

WHAT OTHER PROTECTION DOES THE AUTOMATIC POOL COVER PROVIDE?

A closed automatic pool cover will prevent pets, stray and wild animals, as well as other objects from entering the pool. Our covers are also known to have prevented off-road vehicles and even automobiles from entering the pool.

WILL THE POOL COVER ROLL-UP BE AN OBSTRUCTION?

No. On new construction, the cover rolls up under the pool cover lid.

WHAT OTHER BENEFITS DOES AN AUTOMATIC POOL COVER PROVIDE?

Safety is the most important benefit, but an automatic pool cover also provides savings in heating costs (contains heat when the cover is closed), and reduces evaporation, making chemicals more efficient and longer-lasting. An automatic pool cover prolongs the life of pool equipment such as pumps and filters, by keeping leaves and other debris out of the pool.

IS AN AUTOMATIC COVER THE ONLY NECESSARY BARRIER FOR MY POOL?

Some areas have determined that an automatic pool cover is the only required barrier, while other areas call for two forms of protection, like the addition of a fence. Check local statutes/codes.

OPERATION OF AN AUTO COVER

IS IT SAFE TO WALK ON A POOL COVER?

Although covers can support thousands of pounds in surface weight, it is only recommended to walk on the cover in emergency situations.

IS IT NECESSARY TO USE A POOL COVER PUMP?

Yes, the AST 1346 requires a UL-listed pump meeting water removal standards. Poolsafe supplies pumps that meet the AST 1346 requirements.

HOW MUCH MAINTENANCE IS REQUIRED?

Our cover systems are engineered for durability and longevity. Operating the system as directed, and scheduling annual professional maintenance, ensures continuous and proper system operation.

CAN AN AUTOMATIC COVER BE INSTALLED ON ANY POOL?

An automatic cover can be installed on many in-ground pools. Coordination with pool builders before and during the construction process is essential to ensure the best outcome.

POOLS SAFE SERVICE

ARE POOLS SAFE TECHNICIANS TRAINED?

Poolsafe technicians are continually trained on installation and service techniques for all manufacturer systems.

WHEN IS AN AUTOMATIC COVER INSTALLED?

An install is completed in conjunction with new-pool construction, or per request on an existing pool.

WHAT WARRANTY DOES POOLS SAFE PROVIDE?

Poolsafe provides a one-year labor warranty. The system warranty is provided by Automatic Pool Covers, Inc. The limited warranty covers the mechanical components ten (10) years; the electrical components three (3) years, and the cover material five (5) years: 3-years full and 2-years prorated. Consult Poolsafe for full details. Warranty may change without notice.

WHERE IS POOLS SAFE LOCATED?

Poolsafe has trained professionals who service California markets.

WHAT SYSTEM DOES POOLS SAFE USE?

Poolsafe exclusively uses the AutoGuard™ system by Automatic Pool Covers, Inc. We also keep service parts for other systems on-hand enabling us to perform basic service.

Your Automatic Pool Cover Authority™



READY TO PARTNER WITH US?
CALL 866-639-5045

